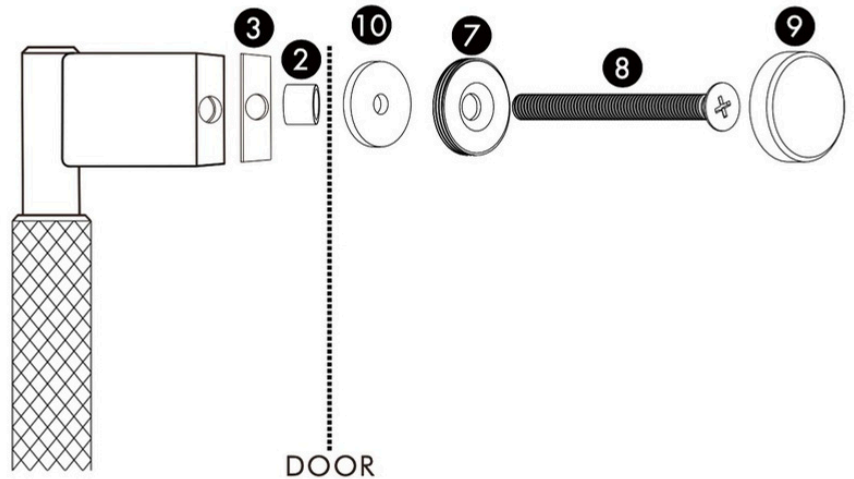


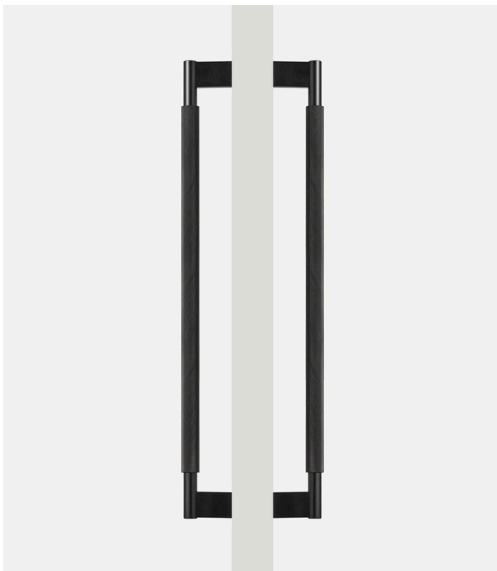
## Installation Instructions - Single Pull

Points 2, 3, 7, 8, 9 and 10 is for a glass door.  
Points 7, 8 and 9 is for a wooden/cabinet door.



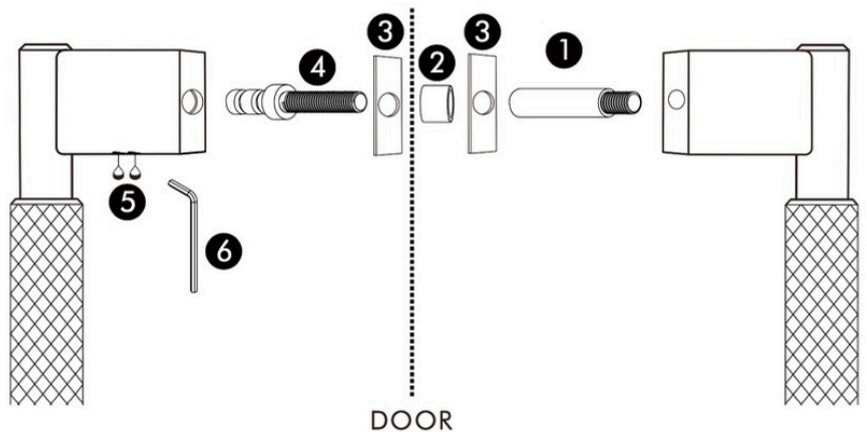
### Applicable door thickness:

Glass door: 8-22mm, Hole dia.:10mm.  
Wooden door: 13-42mm, Hole dia.:6mm.



## Installation Instructions - Double Pull

Points 2, 3, 4, 5 and 6 is for a glass door.  
Points 4, 5 and 6 is for a 11-25mm wooden door.  
Points 1, 4, 5 and 6 is for 40-58mm wooden door.

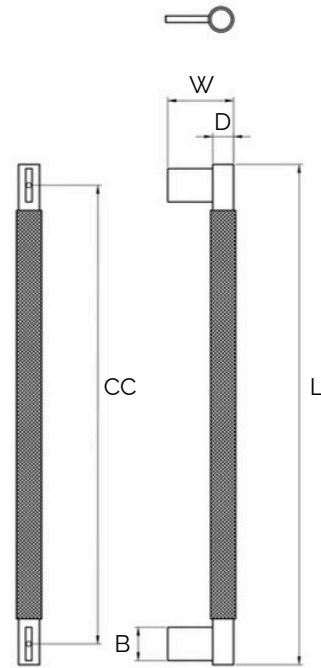
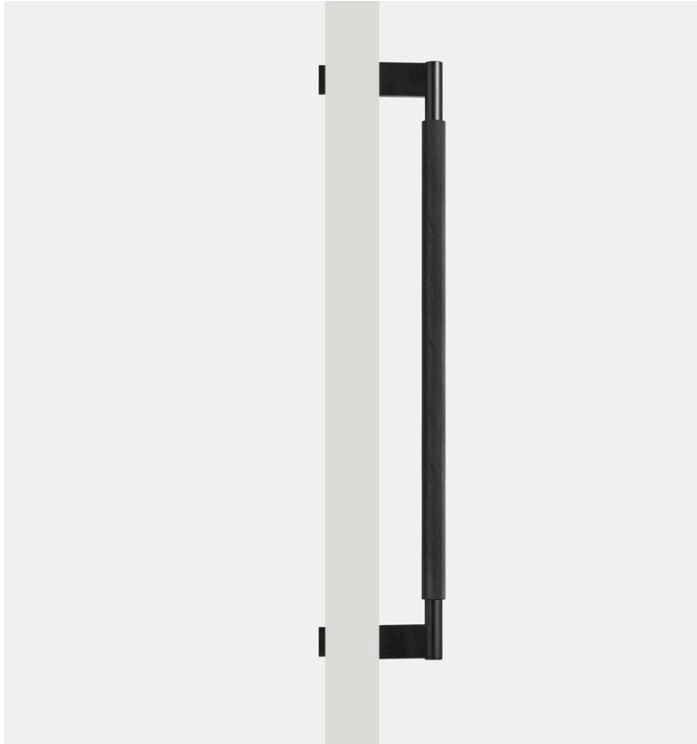


### Applicable door thickness:

Glass door: 5-20mm, Hole dia.:10mm.  
Wooden door: 11-25mm, Hole dia.:6mm.  
Wooden door:40-58mm, Hole dia.:8mm.



# Matte Black Brass Knurled Door Pull (Single - Sided)



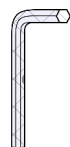
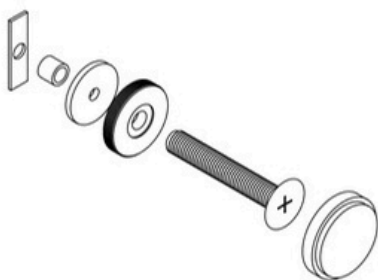
All dimensions are in mm

\*Sizes provided are nominal and intended as a guide\*

| SKU             | L<br>(Length) | CC<br>(Centre-to-Centre) | H<br>(Height) | D<br>(Diameter) | B<br>(Base) |
|-----------------|---------------|--------------------------|---------------|-----------------|-------------|
| DAP-001-S300-MB | 300           | 270                      | 60            | 20              | 28          |
| DAP-001-S450-MB | 450           | 420                      | 60            | 20              | 28          |
| DAP-001-S600-MB | 600           | 570                      | 60            | 20              | 28          |

### Inclusions:

- x2 units of the following:
- Allen key

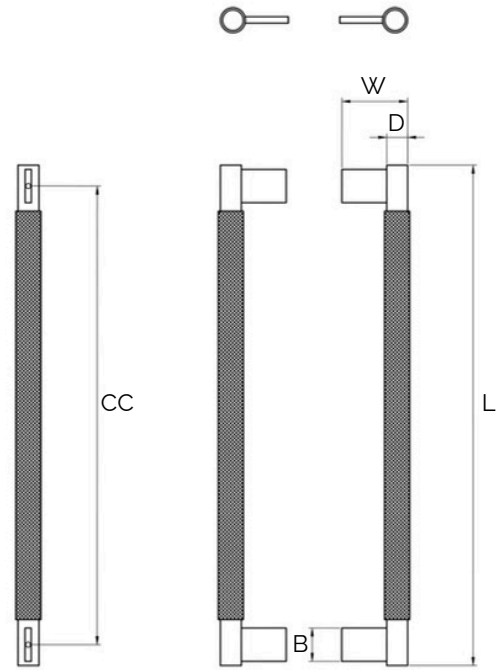
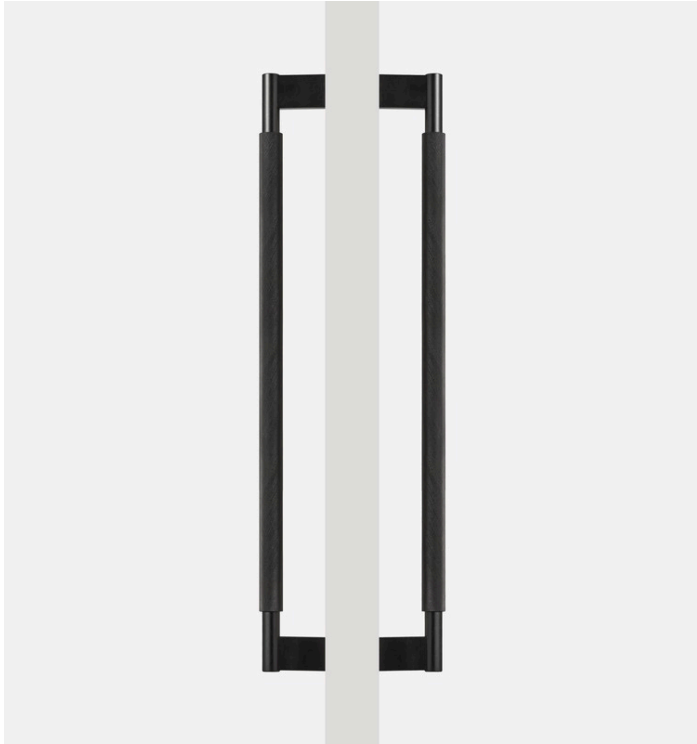


\*Product Care : Wipe and clean with a damp cloth and do not use any cleaning agents or chemicals.\*





# Matte Black Brass Knurled Door Pull (Double - Sided)



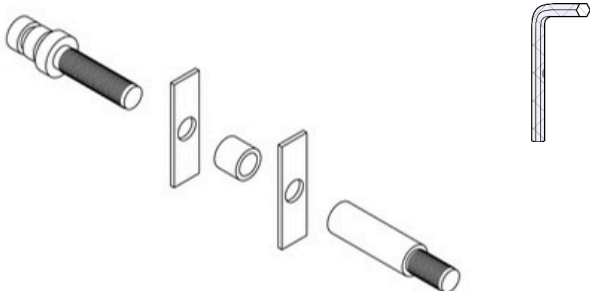
All dimensions are in mm

\*Sizes provided are nominal and intended as a guide\*

| SKU             | L<br>(Length) | CC<br>(Centre-to-Centre) | H<br>(Height) | D<br>(Diameter) | B<br>(Base) |
|-----------------|---------------|--------------------------|---------------|-----------------|-------------|
| DAP-001-D300-MB | 300           | 270                      | 60            | 20              | 28          |
| DAP-001-D450-MB | 450           | 420                      | 60            | 20              | 28          |
| DAP-001-D600-MB | 600           | 570                      | 60            | 20              | 28          |

### Inclusions:

- x2 units of the following:
- Allen key



\*Product Care : Wipe and clean with a damp cloth and do not use any cleaning agents or chemicals.\*



WARRANTY