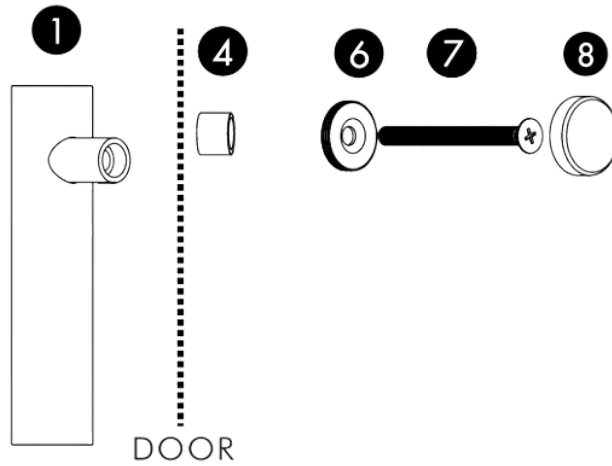


Installation Instructions - Single Pull

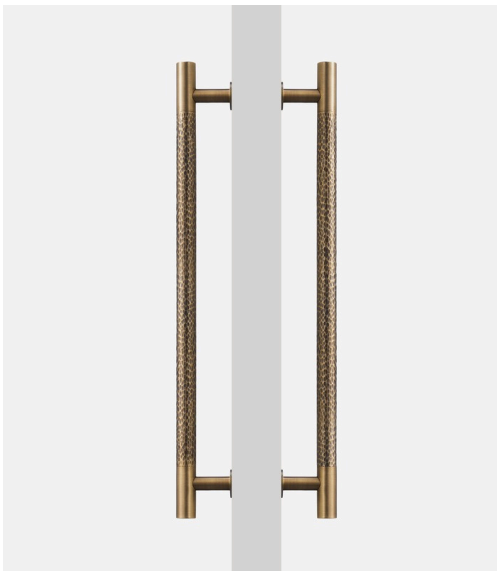
Points 6, 7 and 8 is for a wooden/cabinet door.



Applicable door thickness:

Wooden door: 13-42mm, Hole dia.: 6mm.

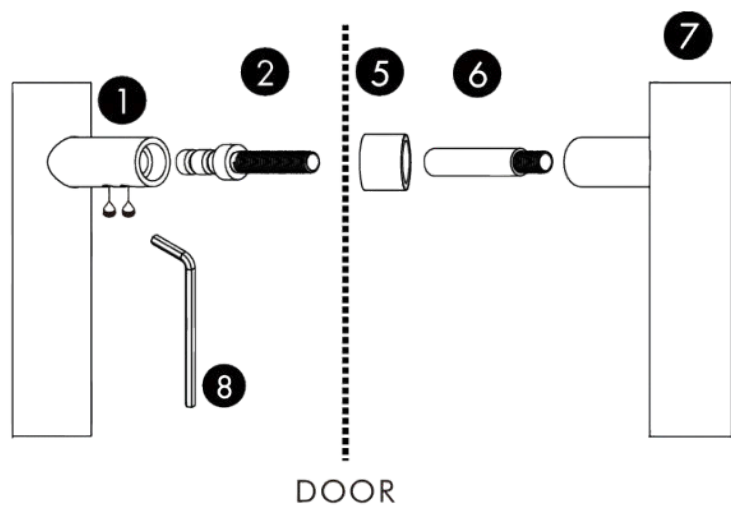
Wooden door: 43-70mm, Hole dia.: 8mm.



Installation Instructions - Double Pull

Points 1, 2 and 8 is for a 8-30mm wooden door.

Points 1, 2, 6 and 8 is for 35-63mm wooden door.



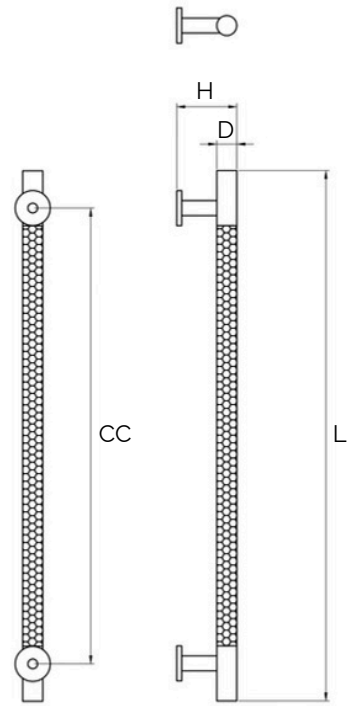
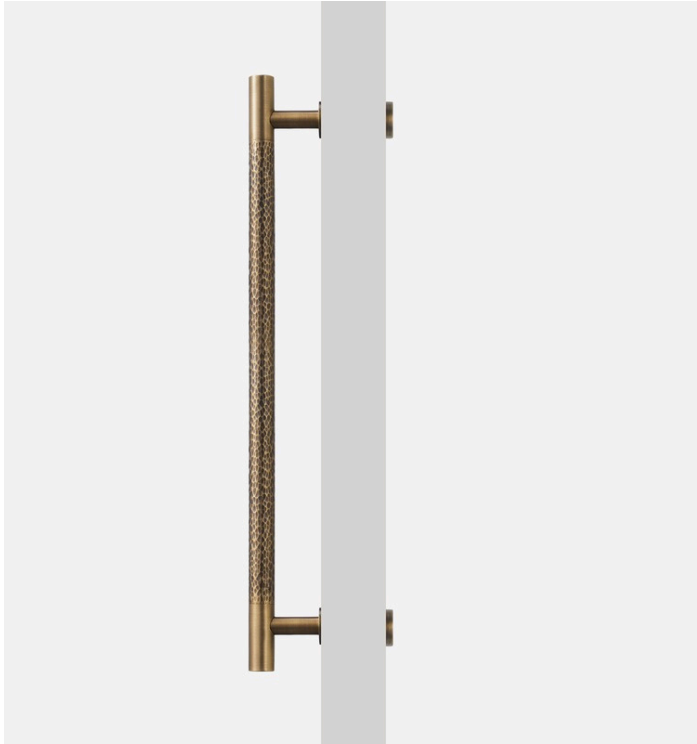
Applicable door thickness:

Wooden door: 8-30mm, Hole dia.: 6mm.

Wooden door: 35-63mm, Hole dia.: 8mm.



Antique Bronze Brass Hammered Door Pull (Single - Sided)



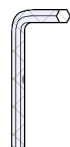
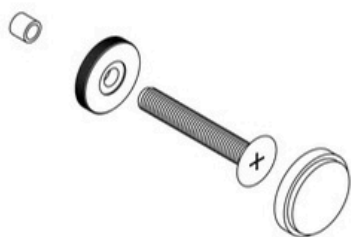
All dimensions are in mm

Sizes provided are nominal and intended as a guide

| SKU | L (Length) | CC (Centre-to-Centre) | H (Height) | D (Base) |
|-----------------|---------------|--------------------------|---------------|-------------|
| DAP-002-S300-AB | 300 | 250 | 53 | 20 |
| DAP-002-S450-AB | 450 | 385 | 53 | 20 |
| DAP-003-S600-AB | 600 | 534 | 53 | 20 |

Inclusions:

- x2 units of the following:
- Allen key



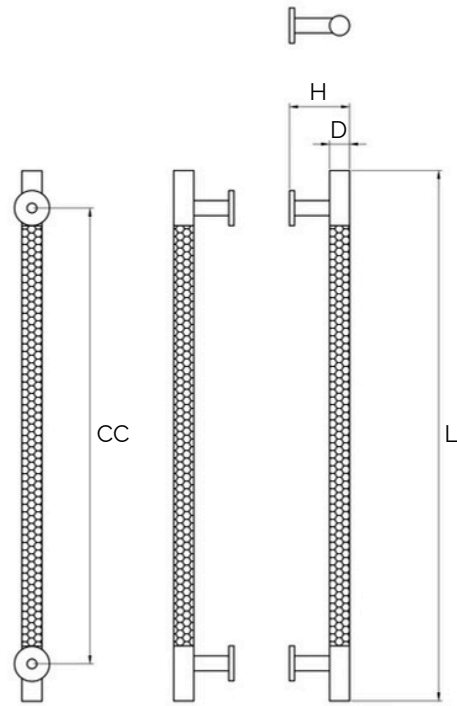
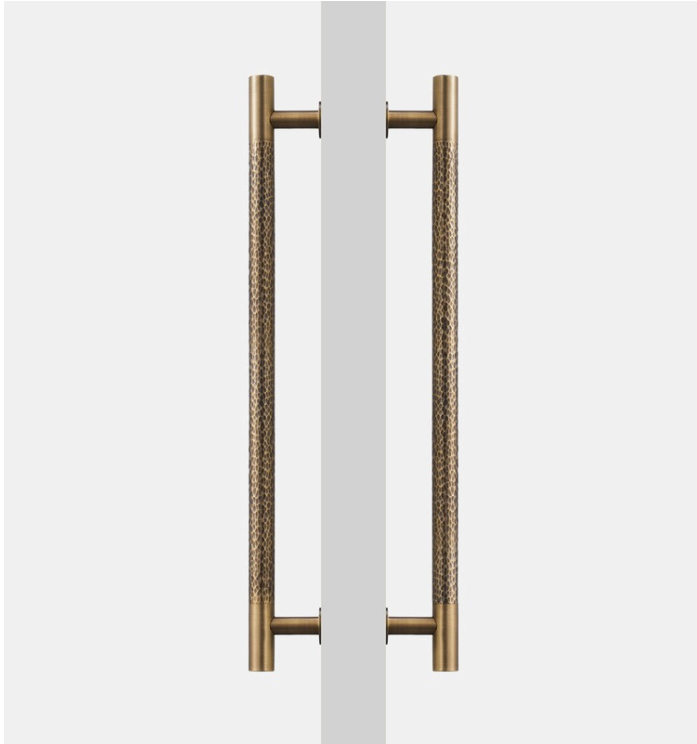
Product Care : Wipe and clean with a damp cloth and do not use any cleaning agents or chemicals.



WARRANTY



Antique Bronze Brass Hammered Door Pull (Double - Sided)



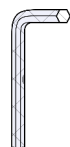
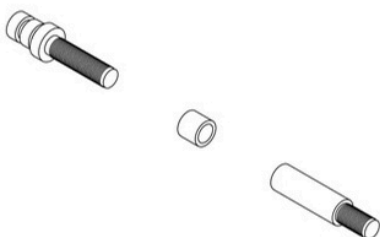
All dimensions are in mm

Sizes provided are nominal and intended as a guide

| SKU | L (Length) | CC (Centre-to-Centre) | H (Height) | D (Base) |
|-----------------|---------------|--------------------------|---------------|-------------|
| DAP-002-D300-AB | 300 | 250 | 53 | 20 |
| DAP-002-D450-AB | 450 | 385 | 53 | 20 |
| DAP-003-D600-AB | 600 | 534 | 53 | 20 |

Inclusions:

- x2 units of the following:
- Allen key



Product Care : Wipe and clean with a damp cloth and do not use any cleaning agents or chemicals.



WARRANTY