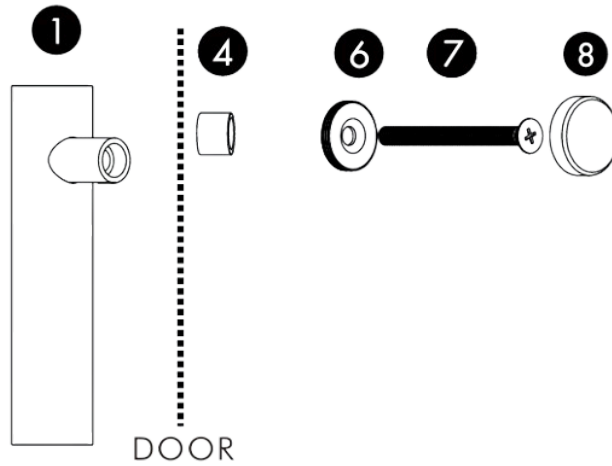


## Installation Instructions - Single Pull

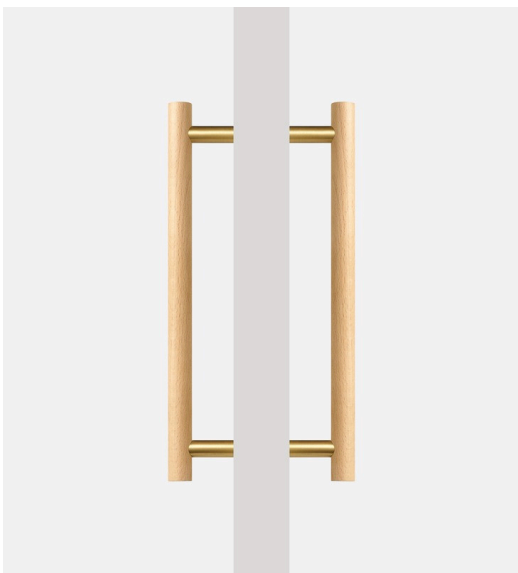
Points 6, 7 and 8 is for a wooden/cabinet door.



### Applicable door thickness:

Wooden door: 13-42mm, Hole dia.: 6mm.

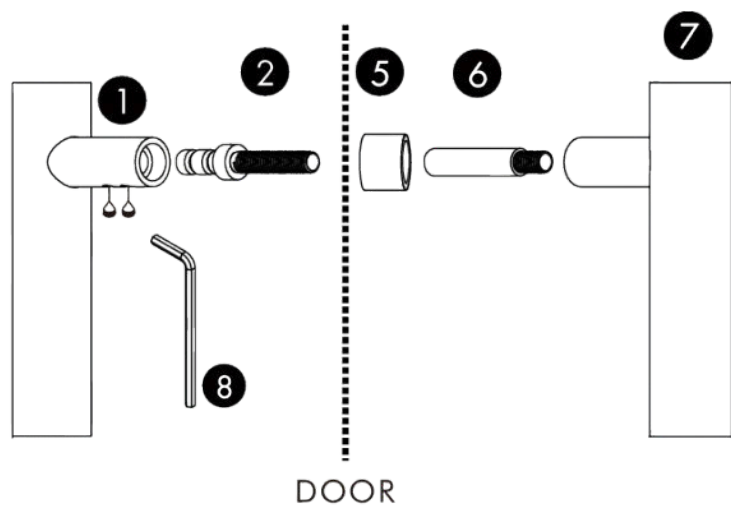
Wooden door: 43-70mm, Hole dia.: 8mm.



## Installation Instructions - Double Pull

Points 1, 2 and 8 is for a 8-30mm wooden door.

Points 1, 2, 6 and 8 is for 35-63mm wooden door.



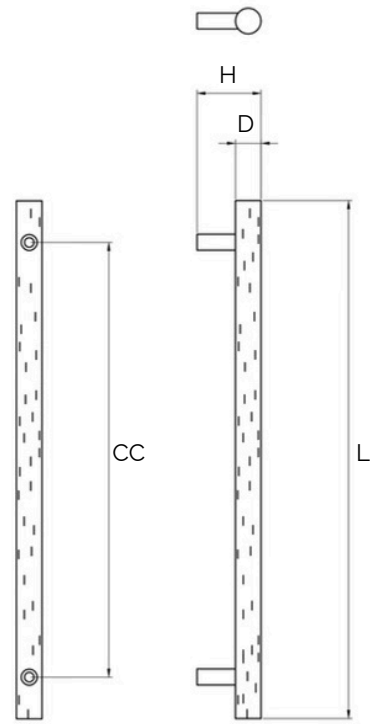
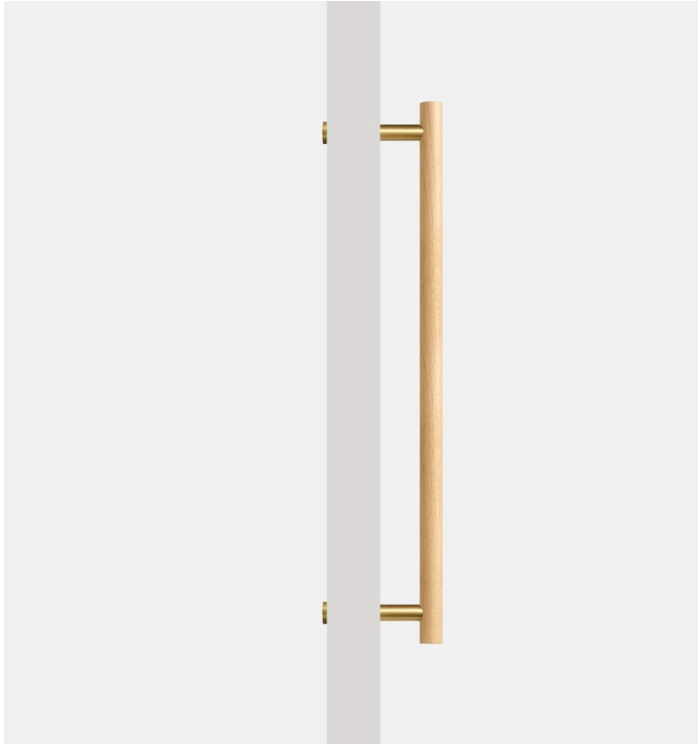
### Applicable door thickness:

Wooden door: 8-30mm, Hole dia.: 6mm.

Wooden door: 35-63mm, Hole dia.: 8mm.



# Beech Wood and Matte Brass Door Pull (Single - Sided)



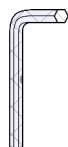
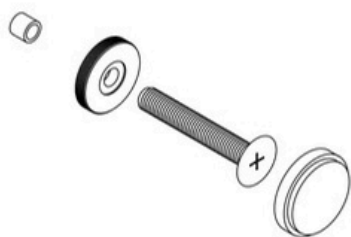
All dimensions are in mm

\*Sizes provided are nominal and intended as a guide\*

SKU	L (Length)	CC (Centre-to-Centre)	H (Height)	D (Base)
DAP-003-S300-MBR	300	250	53	20
DAP-003-S450-MBR	450	384	53	20

### Inclusions:

- x2 units of the following:
- Allen key



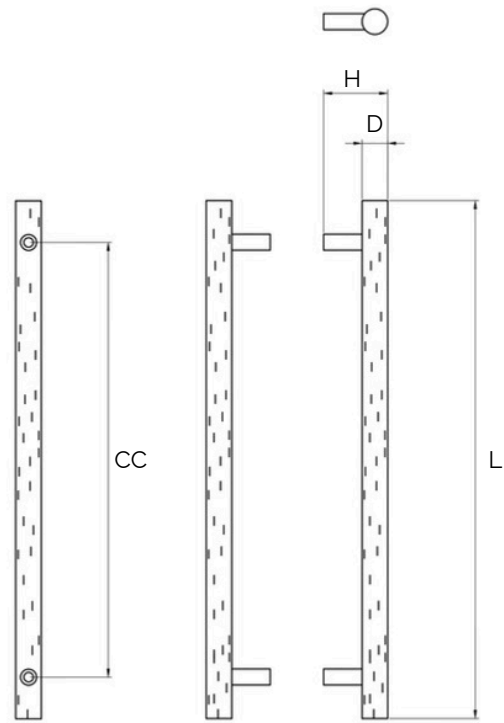
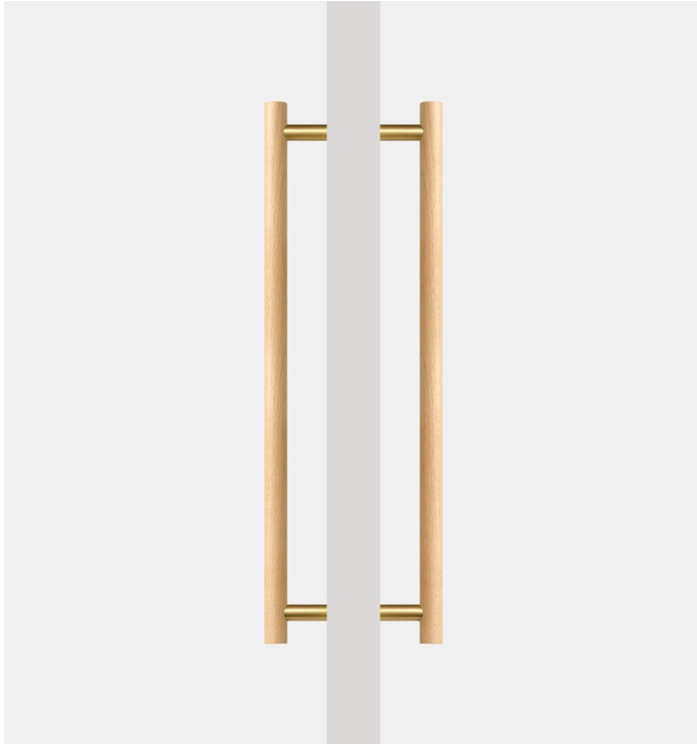
\*Product Care : Wipe and clean with a damp cloth and do not use any cleaning agents or chemicals.\*



WARRANTY



# Beech Wood and Matte Brass Door Pull (Double - Sided)



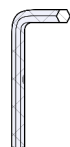
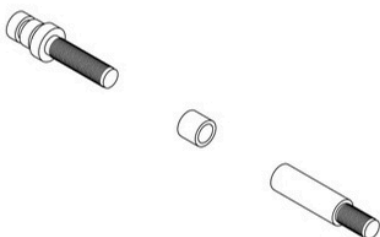
All dimensions are in mm

\*Sizes provided are nominal and intended as a guide\*

SKU	L (Length)	CC (Centre-to-Centre)	H (Height)	D (Base)
DAP-003-D300-MBR	300	250	53	20
DAP-003-D450-MBR	450	384	53	20

### Inclusions:

- x2 units of the following:
- Allen key



\*Product Care : Wipe and clean with a damp cloth and do not use any cleaning agents or chemicals.\*



WARRANTY